



# TLKR<sup>TM</sup> T80 EXTREME Walkie-Talkies



## GO BEYOND

KEEPING YOU SAFER IN THE HARSHTEST OF ENVIRONMENTS

Ultimate specification, rugged and all-weather proof, the TLKR T80Extreme is ready for adventures in the harshest of environments. With a range of up to 10km\*, a tough water resistant design and essential accessories, the TLKR T80Extreme will keep you in touch on the wildest tracks and highest peaks.



### T80 EXTREME FEATURES

- PMR446 radios - license free
- Up to 10km range\*
- Rechargeable NiMH batteries (supplied)
- 8 Channels + 121 codes
- Scan/Monitor
- 10 call tones
- Hands-free
- LED Torch
- Vibrate Alert
- Weather Proof
- Handy carry case with accessories
- Available as Quad Pack (four radios plus accessories) or Dual Pack (two radios plus accessories)



10km\*



Weatherproof



Integrated LED Torch

**PRODUCT SPEC SHEET**  
TLKR - T80EXTREME



# TLKR™ T80 EXTREME Walkie-Talkies

## GENERAL

Name	TLKR-T80EXTREME
Colour	Yellow / Black
Freq Band	PMR446
Tx Power	500mW
Bandwidth	12.5Khz
Channels	8
Weight	140g (excluding batteries)
Range	Up to 10km*
Size WxDxH	5.7 x 17.3 x 4.0 cm

## PACKAGE CONTENTS

DUAL PACK	QUAD PACK
Two Radios	Four Radios
Two Belt Clips	Four Belt Clips
Mains Adapter	Two Mains Adapters
2 NiMH rechargeable batteries	4 NiMH rechargeable batteries
Charger Pod	Two Charger Pods
Two Lanyards	Four Lanyards
Two Earpieces	Four Earpieces
Instruction Manual	Instruction Manual
Hard Carry Case	Hard Carry Case

## MECHANICAL

8 Channels + 121 Codes
LCD Display with Backlight
Keypad Lock
Battery Level Indicator
Belt Clip
9V Jack
500mW Transmit Power
Single Pin Headset Connector
Weatherproof IPx4

## FEATURES

LED Torch
Group Call
Scan
VoX
Auto squelch
Channel monitor
Clock/Stop Watch
Room monitor
Auto power off

## ALERTS

10 Call Tones
Vibrate Alert
Keypad tones
Talk confirmation tone/Roger beep

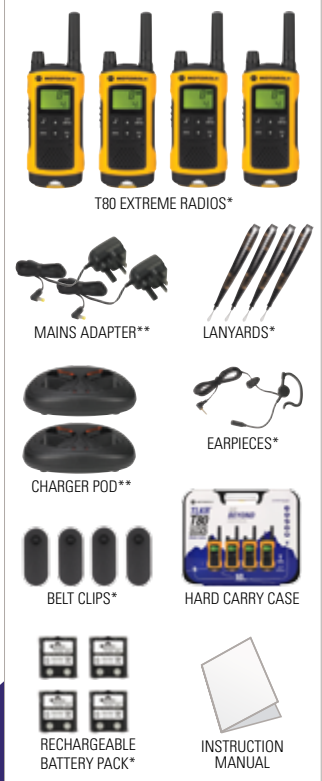
## CHARGING

Twin Charger Pod (supplied)
AC Adaptor
Power source - Rechargeable NiMH pack (supplied)
4 x AAA Alkaline batteries (not supplied)

## BATTERY LIFE (TYPICAL)

NiMH (supplied) - approx. 16hrs
---------------------------------

## PACKAGE CONTENTS



\* Subject to terrain and conditions

\* Quad Pack: x4, Dual Pack: x2  
\*\* Quad Pack: x2, Dual Pack: x1

TO LEARN MORE, VISIT US ON THE WEB AT:  
**WWW.MOTOROLASOLUTIONS.COM/WALKIE-TALKIE**

\*The communication range quoted is calculated based on an unobstructed line of sight test under optimum conditions. Actual range will vary depending on terrain and conditions, and is often less than the maximum possible. Your actual range will be limited by several factors including, but not limited to: terrain, weather conditions, electromagnetic interference, and obstructions.

MOTOROLA, MOTO, MOTOROLA SOLUTIONS and the Stylized M Logo are trademarks or registered trademarks of Motorola Trademark Holdings, LLC and are used under license. All other trademarks are the property of their respective owners. © 2014 Motorola Solutions, Inc. All rights reserved. Specifications are subject to change without notice. All specifications shown are typical. TLKR-T80EXTREME\_SPECSHEET\_ENG\_v2\_(02/14)



**reddot design award**  
winner 2013

Distributed by:

Apex Radio Systems Ltd.  
102 Tantobie Road  
Dorseton Burn  
Newcastle upon Tyne  
NE15 7DQ

Tel 0191 228 0466  
Fax 0191 228 0467  
Email info@apexradio.com

